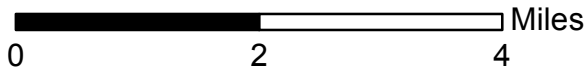
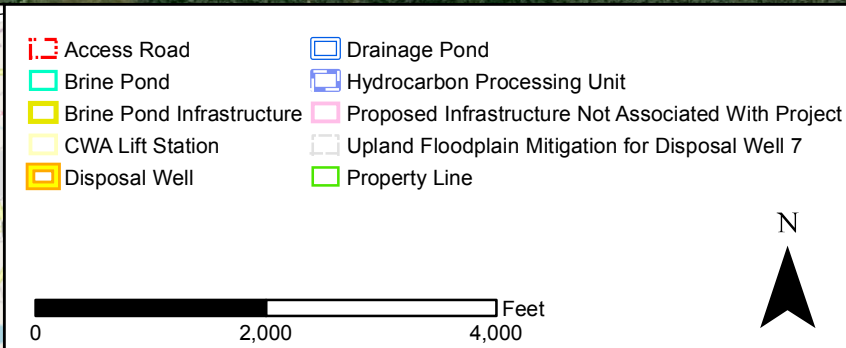
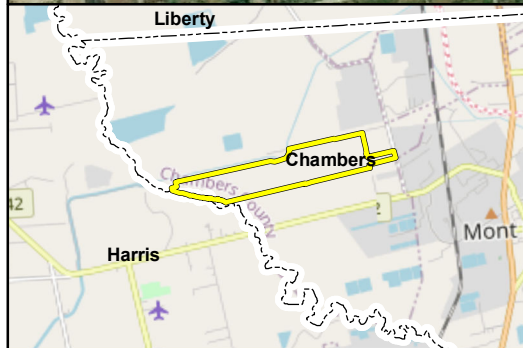
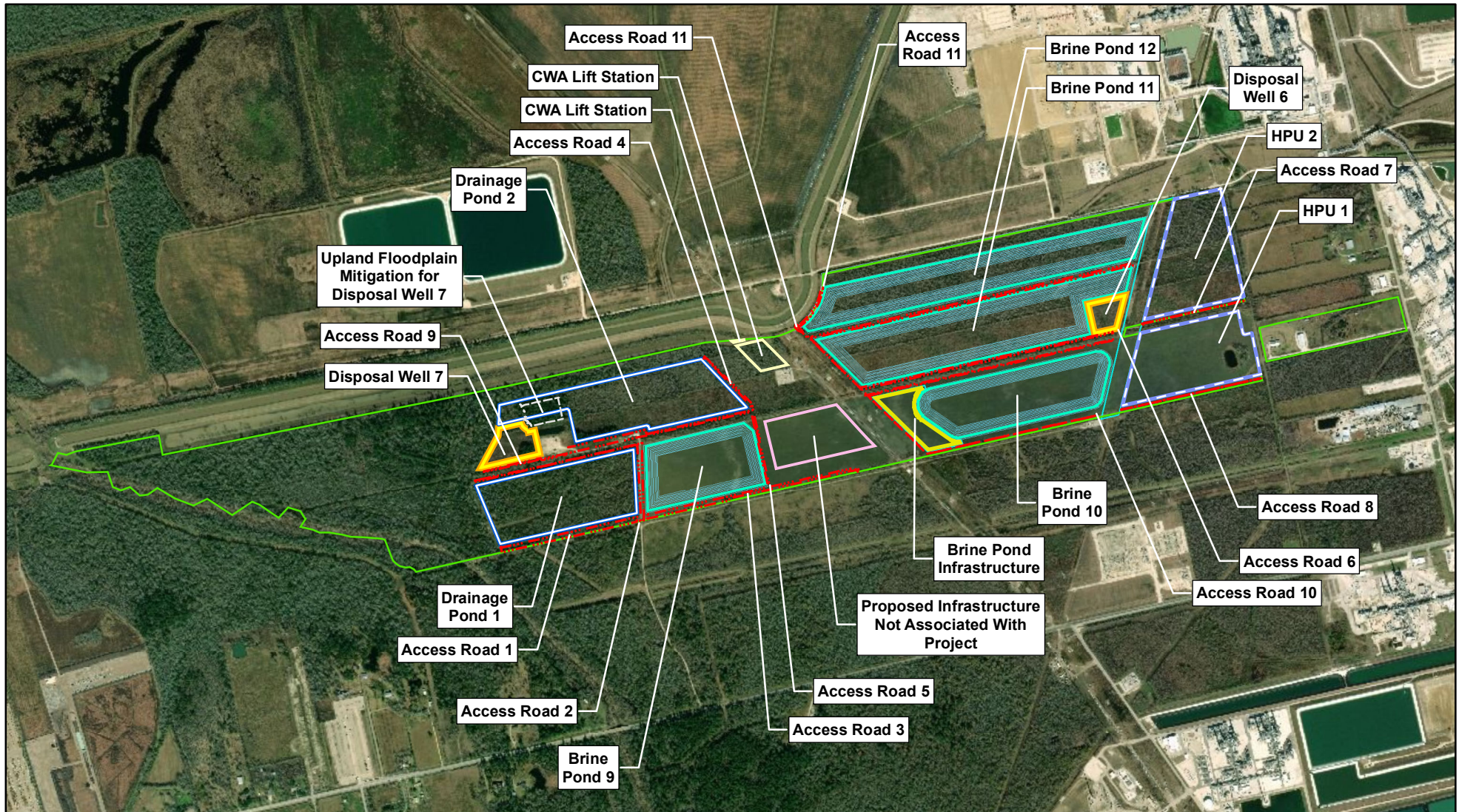



- County
- Survey Area



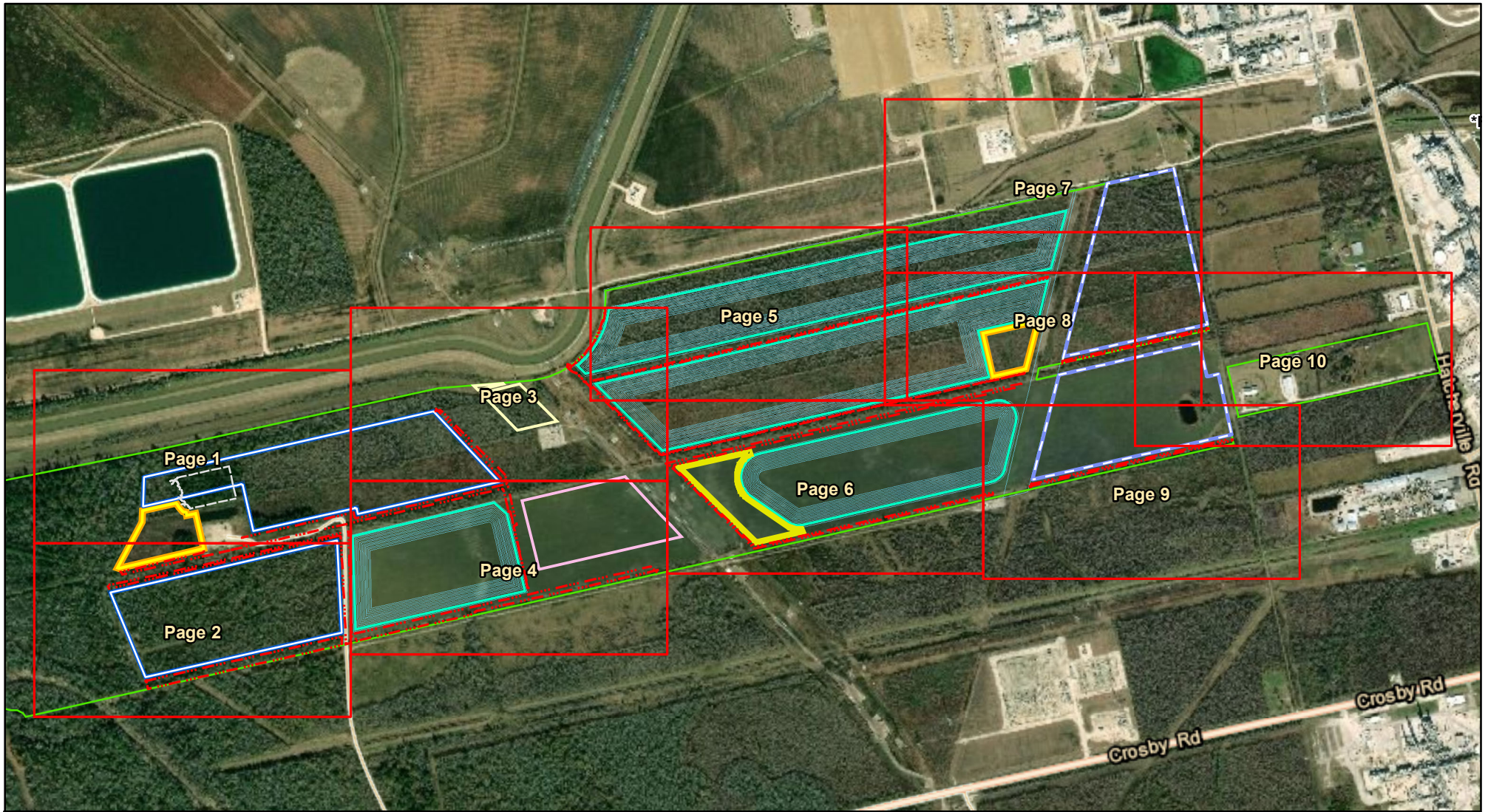
**Vicinity Map
Burton Station Project
Lone Star NGL Mont Belvieu LP
Chambers County, Texas**

Page 1 of 1	Scale: 1:100,000
NAD83 TX S.Cen 4204 Feet	Date: June, 2020

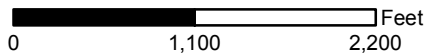



Aerial Overview Map
Burton Station Project
Lone Star NGL Mont Belvieu LP
Chambers County, Texas

Page 1 of 1	Scale: 1:20,000
NAD83 TX SC	Date: May, 2020



- Index Page
- Property Line
- Access Road
- Brine Pond
- Brine Pond Infrastructure
- CWA Lift Station
- Disposal Well
- Drainage Pond
- Hydrocarbon Processing Unit
- Proposed Infrastructure Not Associated With Project
- Upland Floodplain Mitigation for Disposal Well 7



**Page Overview Map for
Aerial Plan View Mapping Exhibits
Burton Station Project
Lone Star NGL Mont Belvieu LP
Chambers County, Texas**

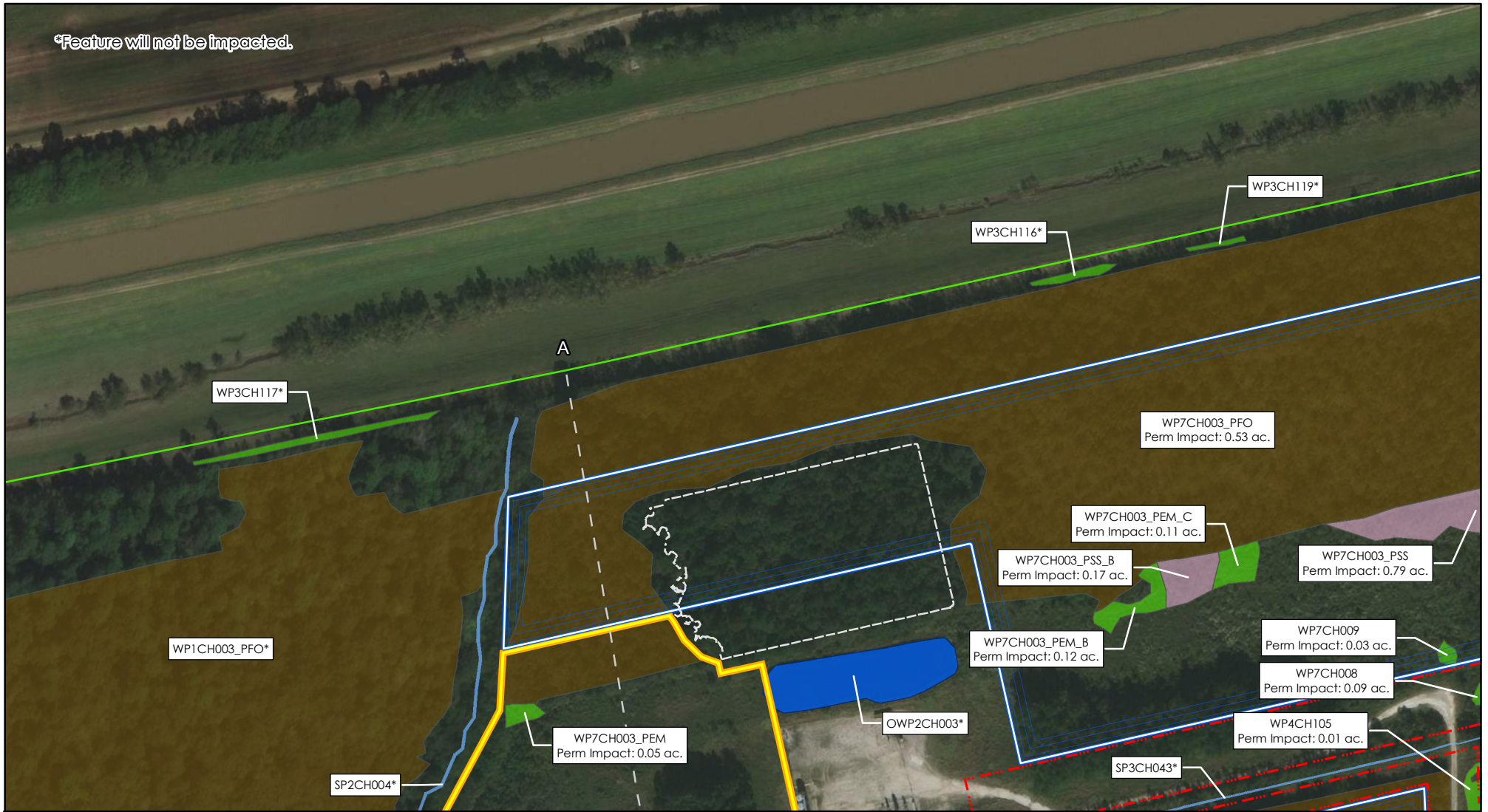
Page 1 of 1

Scale: 1:14,000

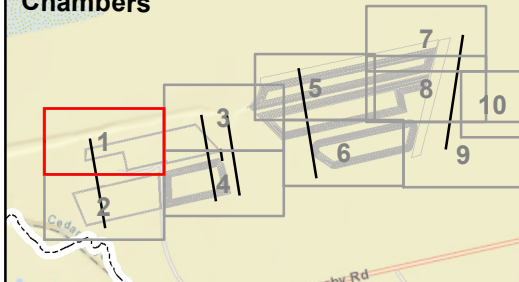
NAD83 TX SC

Date: June, 2020

*Feature will not be impacted.

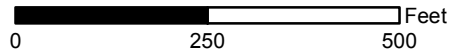


Chambers



- Cross Section
- Access Road
- Brine Pond
- Brine Pond Infrastructure
- CWA Lift Station
- Disposal Well
- Drainage Pond
- Hydrocarbon Processing Unit
- Proposed Infrastructure Not Associated With Project
- Upland Floodplain Mitigation for Disposal Well 7
- Property Line
- Open Water
- Stream
- PEM Wetland
- PFO Wetland
- PSS Wetland

Note:
Temporary Impact for all Features: 0.00 ac.



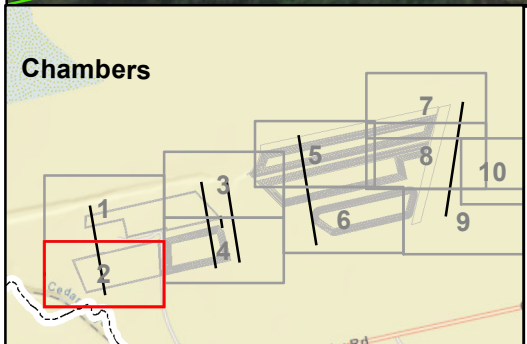
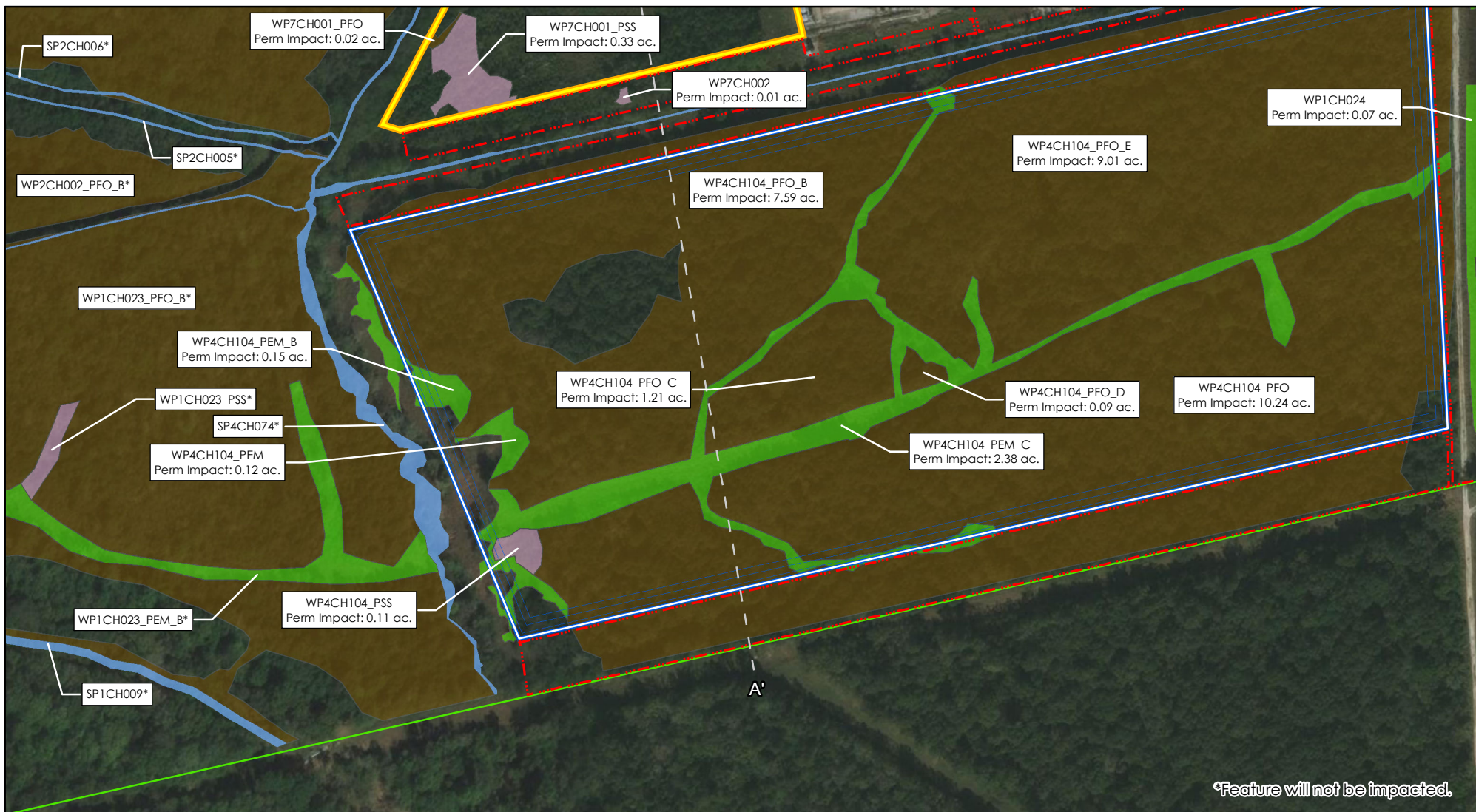
**Aerial Map
Burton Station Project
Lone Star NGL Mont Belvieu LP
Chambers County, Texas**

Page 1 of 10

Scale: 1:3,000

NAD83 TX SC

Date: June, 2020



— — Cross Section	Disposal Well	Property Line
Access Road	Drainage Pond	Open Water
Brine Pond	Hydrocarbon Processing Unit	Stream
Brine Pond Infrastructure	Proposed Infrastructure Not Associated With Project	PEM Wetland
CWA Lift Station	Upland Floodplain Mitigation for Disposal Well 7	PFO Wetland
		PSS Wetland

Note:
Temporary Impact for all Features: 0.00 ac.

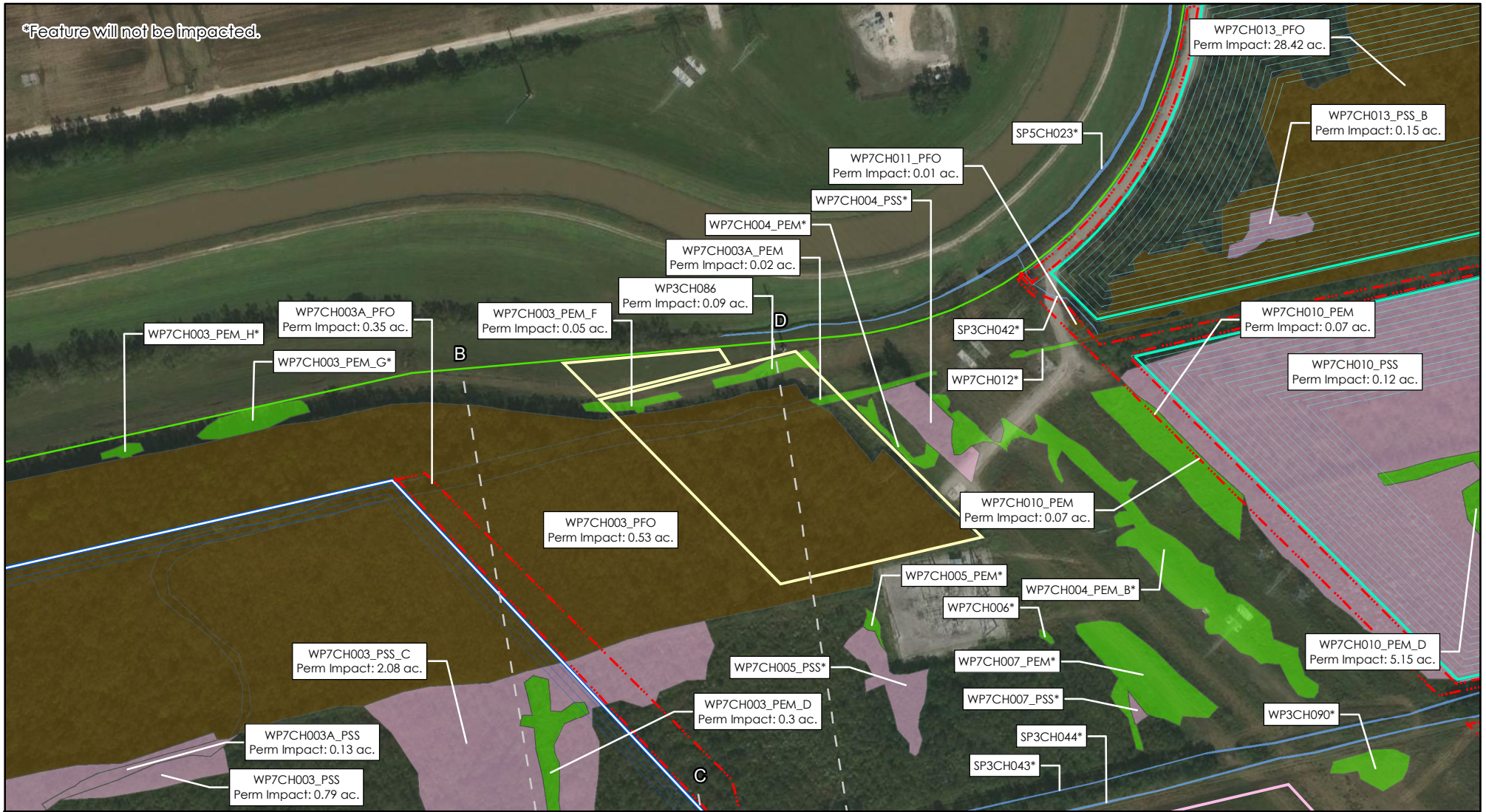
0 250 500 Feet

N

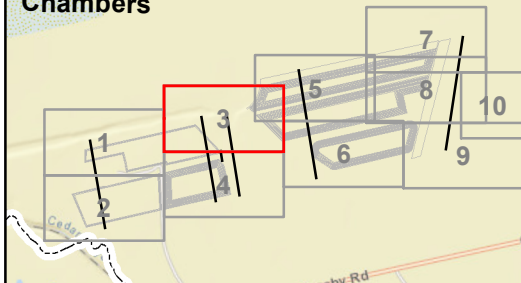
**Aerial Map
Burton Station Project
Lone Star NGL Mont Belvieu LP
Chambers County, Texas**

Page 2 of 10	Scale: 1:3,000
NAD83 TX SC	Date: June, 2020

*Feature will not be impacted.

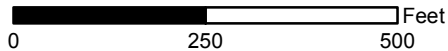


Chambers



- Cross Section
- Access Road
- Brine Pond
- Brine Pond Infrastructure
- CWA Lift Station
- Disposal Well
- Drainage Pond
- Hydrocarbon Processing Unit
- Proposed Infrastructure Not Associated With Project
- Upland Floodplain Mitigation for Disposal Well 7
- Property Line
- Open Water
- Stream
- PEM Wetland
- PFO Wetland
- PSS Wetland

Note:
Temporary Impact for all Features: 0.00 ac.



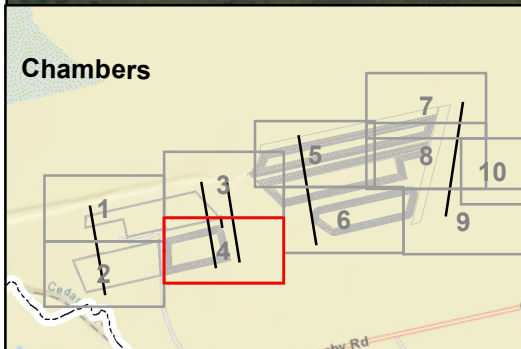
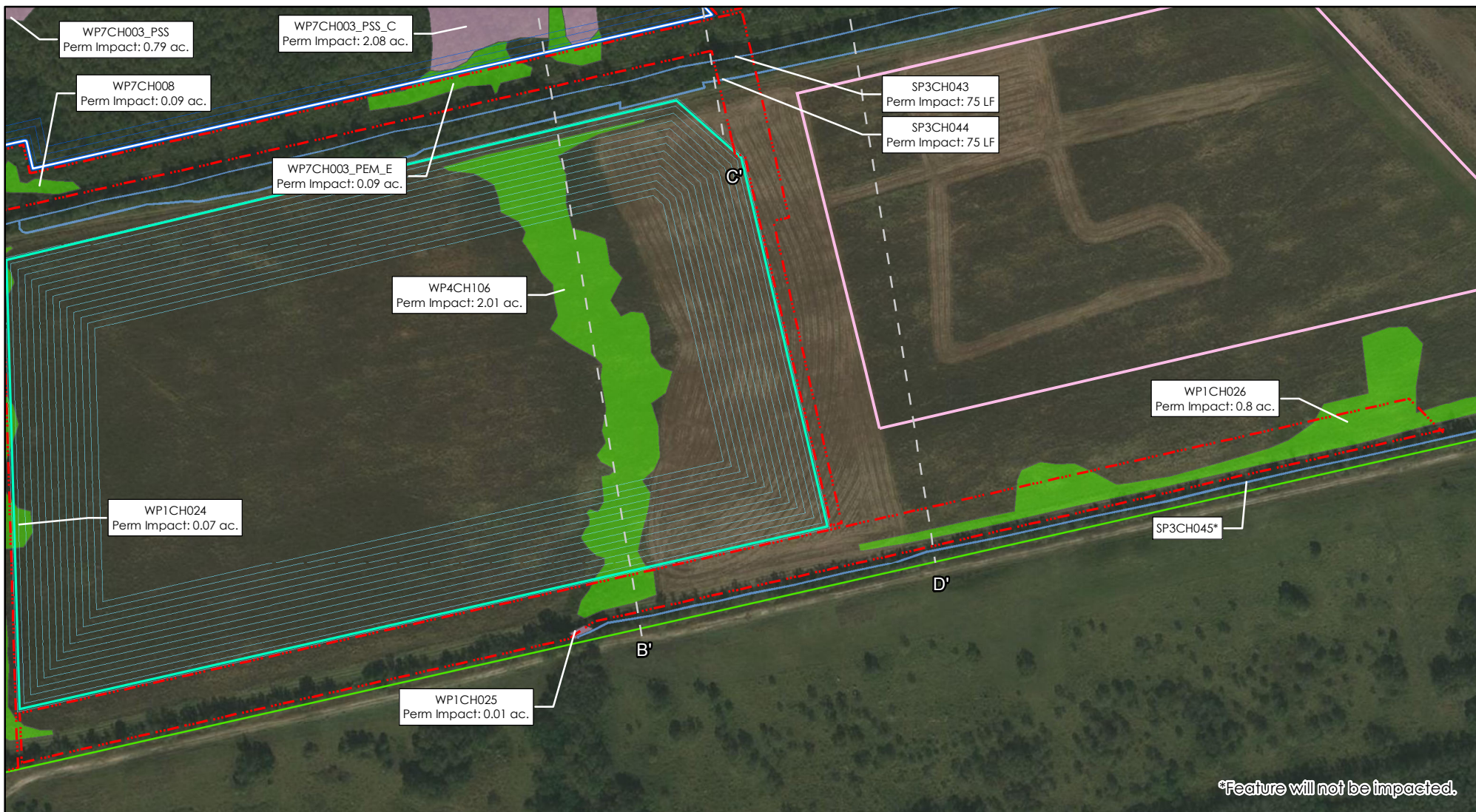
**Aerial Map
Burton Station Project
Lone Star NGL Mont Belvieu LP
Chambers County, Texas**

Page 3 of 10

Scale: 1:3,000

NAD83 TX SC

Date: June, 2020



— — Cross Section	Disposal Well	Property Line
Access Road	Drainage Pond	Open Water
Brine Pond	Hydrocarbon Processing Unit	Stream
Brine Pond Infrastructure	Proposed Infrastructure Not Associated With Project	PEM Wetland
CWA Lift Station	Upland Floodplain Mitigation for Disposal Well 7	PFO Wetland
		PSS Wetland

Note:
Temporary Impact for all Features: 0.00 ac.

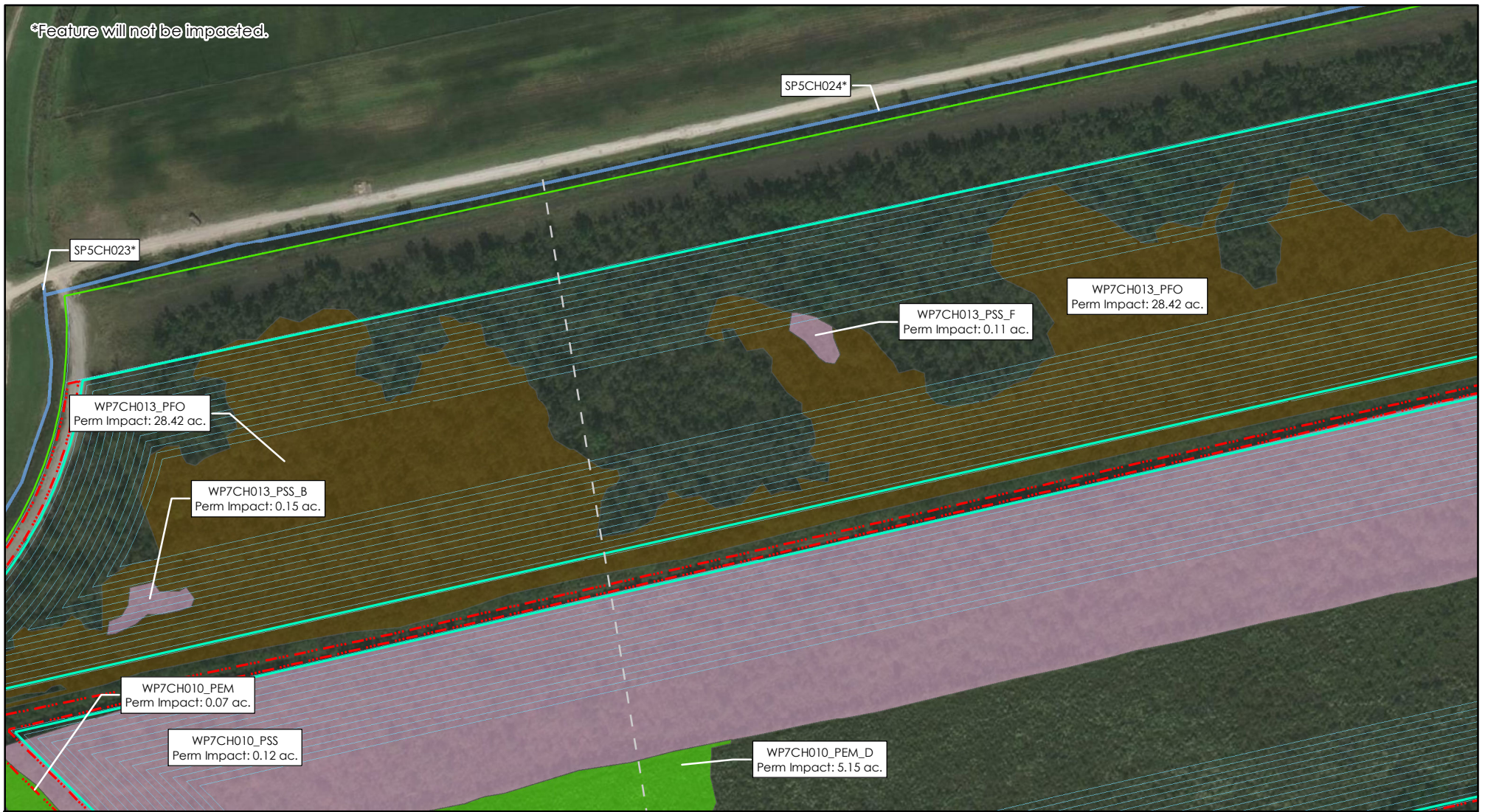
0 250 500 Feet

N

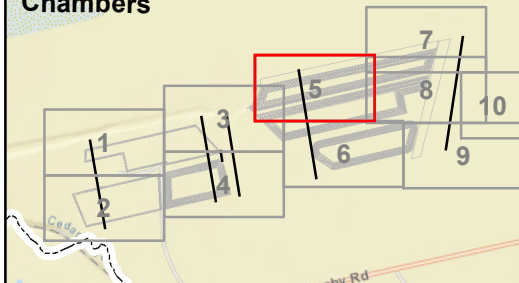
**Aerial Map
Burton Station Project
Lone Star NGL Mont Belvieu LP
Chambers County, Texas**

Page 4 of 10	Scale: 1:3,000
NAD83 TX SC	Date: June, 2020

*Feature will not be impacted.

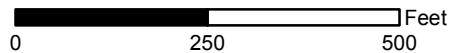


Chambers



- Cross Section
- Access Road
- Brine Pond
- Brine Pond Infrastructure
- CWA Lift Station
- Disposal Well
- Drainage Pond
- Hydrocarbon Processing Unit
- Proposed Infrastructure Not Associated With Project
- Upland Floodplain Mitigation for Disposal Well 7
- Property Line
- Open Water
- Stream
- PEM Wetland
- PFO Wetland
- PSS Wetland

Note:
Temporary Impact for all Features: 0.00 ac.



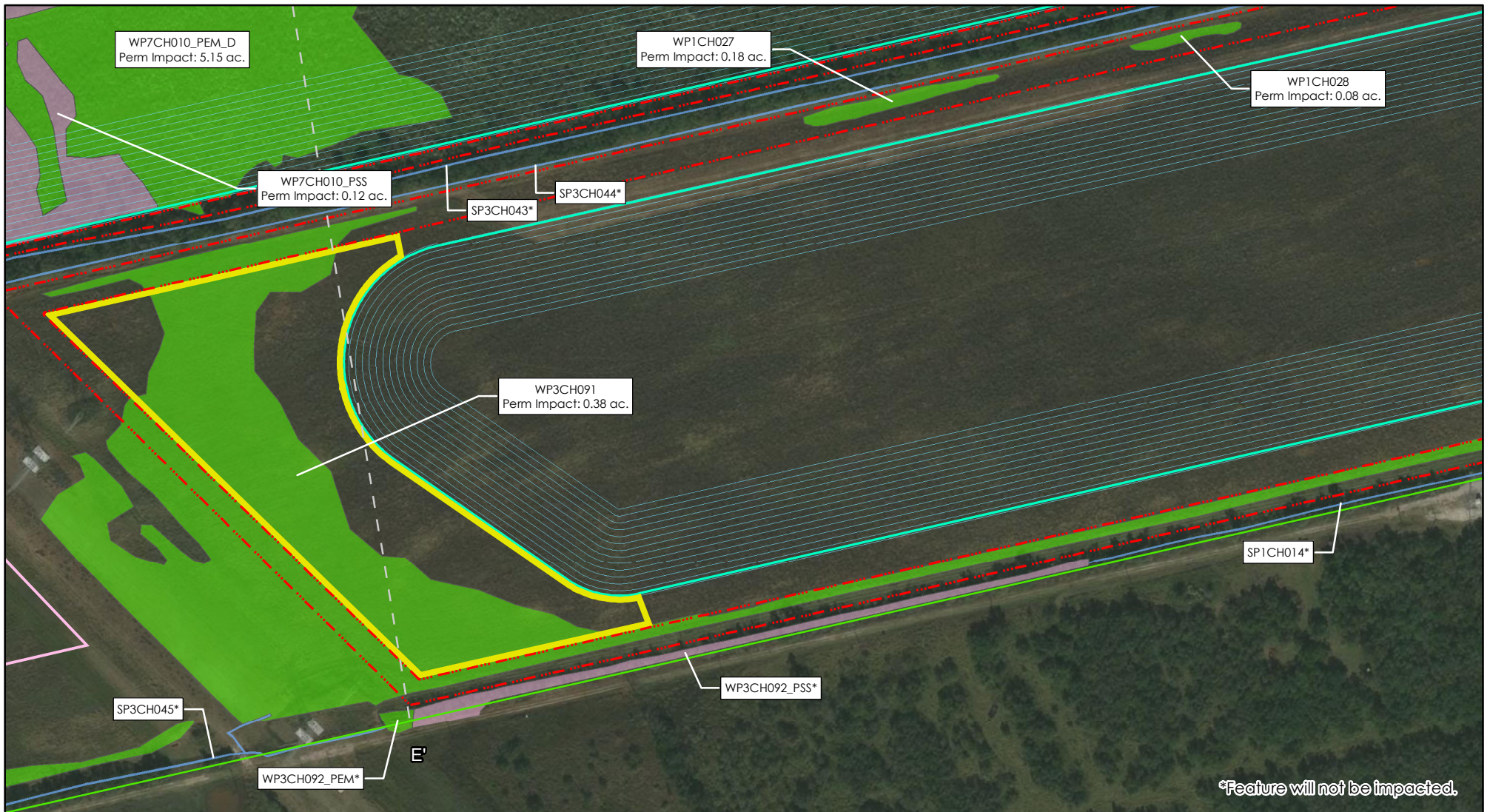
**Aerial Map
Burton Station Project
Lone Star NGL Mont Belvieu LP
Chambers County, Texas**

Page 5 of 10

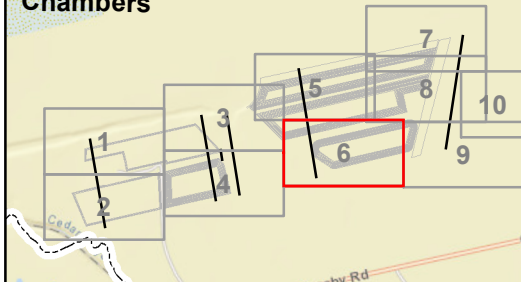
Scale: 1:3,000

NAD83 TX SC

Date: June, 2020

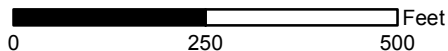


Chambers



- Cross Section
- Access Road
- Brine Pond
- Brine Pond Infrastructure
- CWA Lift Station
- Disposal Well
- Drainage Pond
- Hydrocarbon Processing Unit
- Proposed Infrastructure Not Associated With Project
- Upland Floodplain Mitigation for Disposal Well 7
- Property Line
- Open Water
- Stream
- PEM Wetland
- PFO Wetland
- PSS Wetland

Note:
Temporary Impact for all Features: 0.00 ac.



**Aerial Map
Burton Station Project
Lone Star NGL Mont Belvieu LP
Chambers County, Texas**

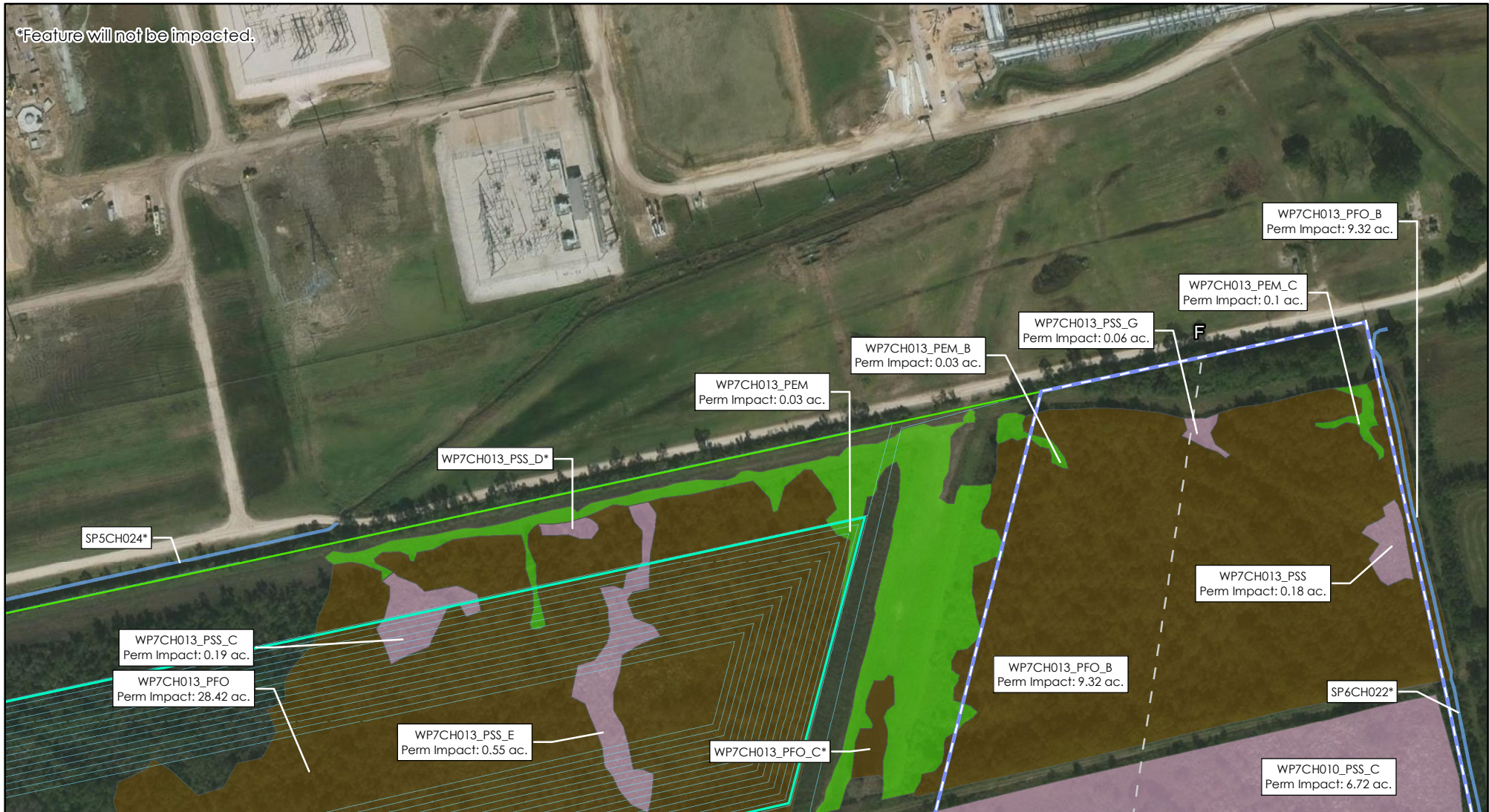
Page 6 of 10

Scale: 1:3,000

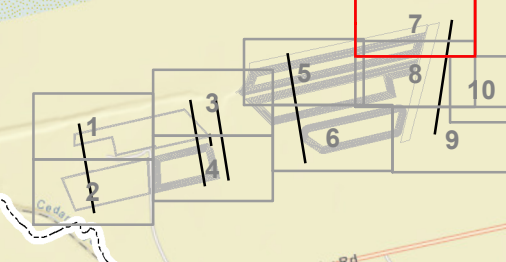
NAD83 TX SC

Date: June, 2020

*Feature will not be impacted.



Chambers



- Cross Section
- [Icon] Disposal Well
- [Icon] Property Line
- [Icon] Access Road
- [Icon] Drainage Pond
- [Icon] Open Water
- [Icon] Brine Pond
- [Icon] Hydrocarbon Processing Unit
- [Icon] Stream
- [Icon] Brine Pond Infrastructure
- [Icon] Proposed Infrastructure Not Associated With Project
- [Icon] PEM Wetland
- [Icon] CWA Lift Station
- [Icon] Upland Floodplain Mitigation for Disposal Well 7
- [Icon] PFO Wetland
- [Icon] PSS Wetland

Note:
Temporary Impact for all Features: 0.00 ac.



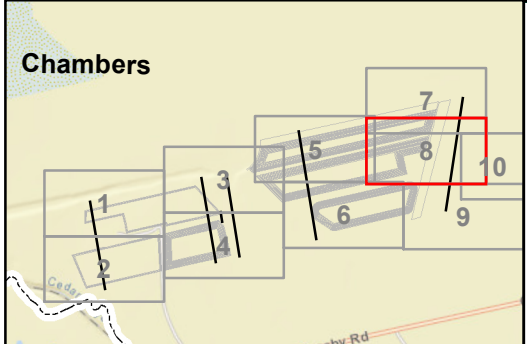
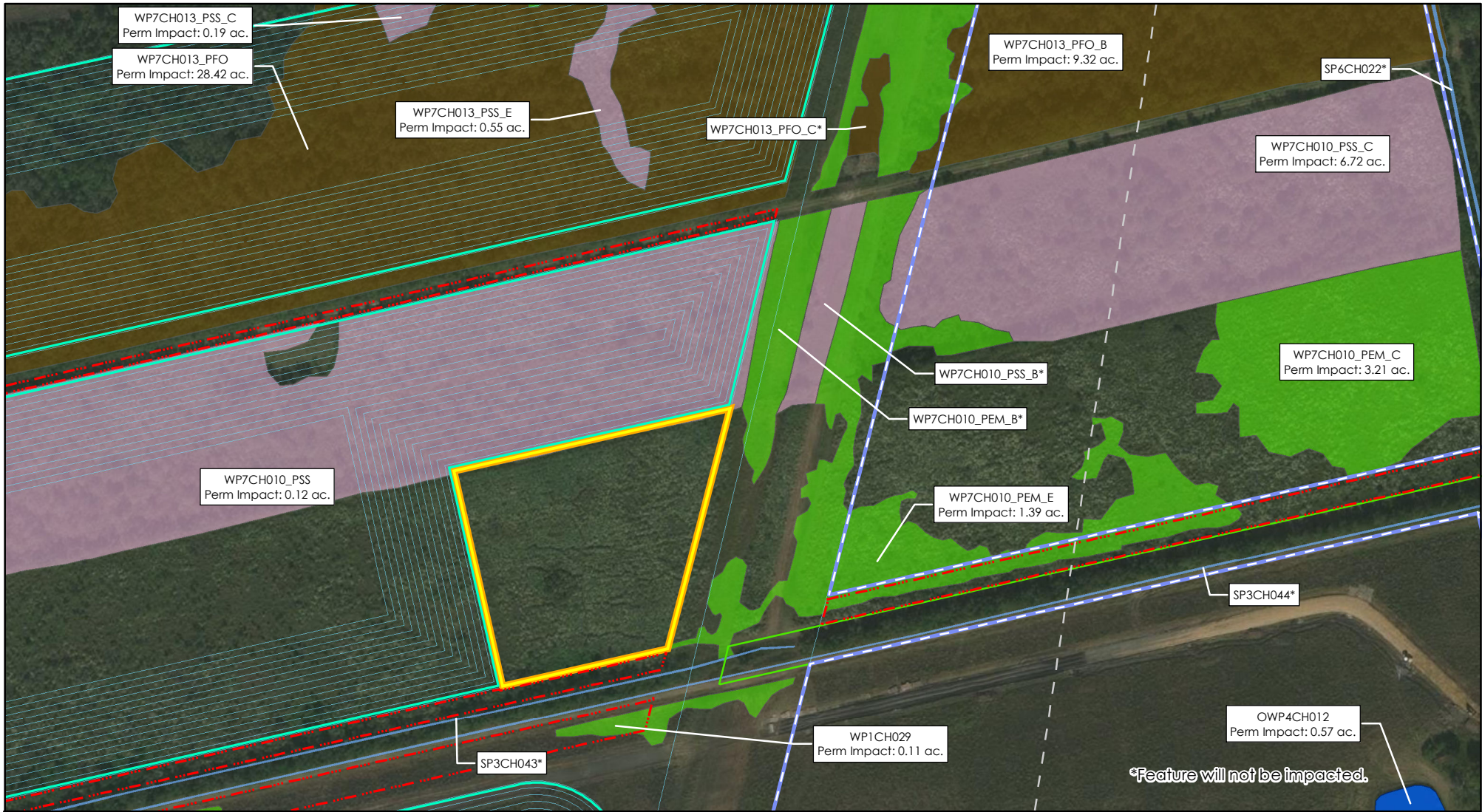
**Aerial Map
Burton Station Project
Lone Star NGL Mont Belvieu LP
Chambers County, Texas**

Page 7 of 10

Scale: 1:3,000

NAD83 TX SC

Date: June, 2020



— — Cross Section	Disposal Well	Property Line
Access Road	Drainage Pond	Open Water
Brine Pond	Hydrocarbon Processing Unit	Stream
Brine Pond Infrastructure	Proposed Infrastructure Not Associated With Project	PEM Wetland
CWA Lift Station	Upland Floodplain Mitigation for Disposal Well 7	PFO Wetland
		PSS Wetland

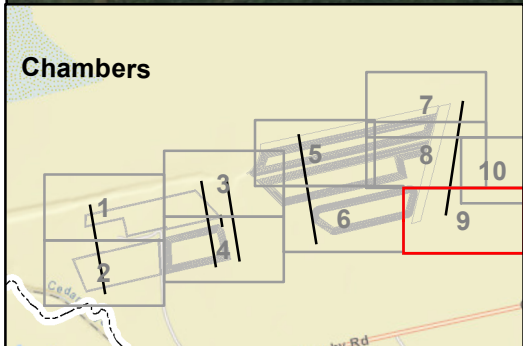
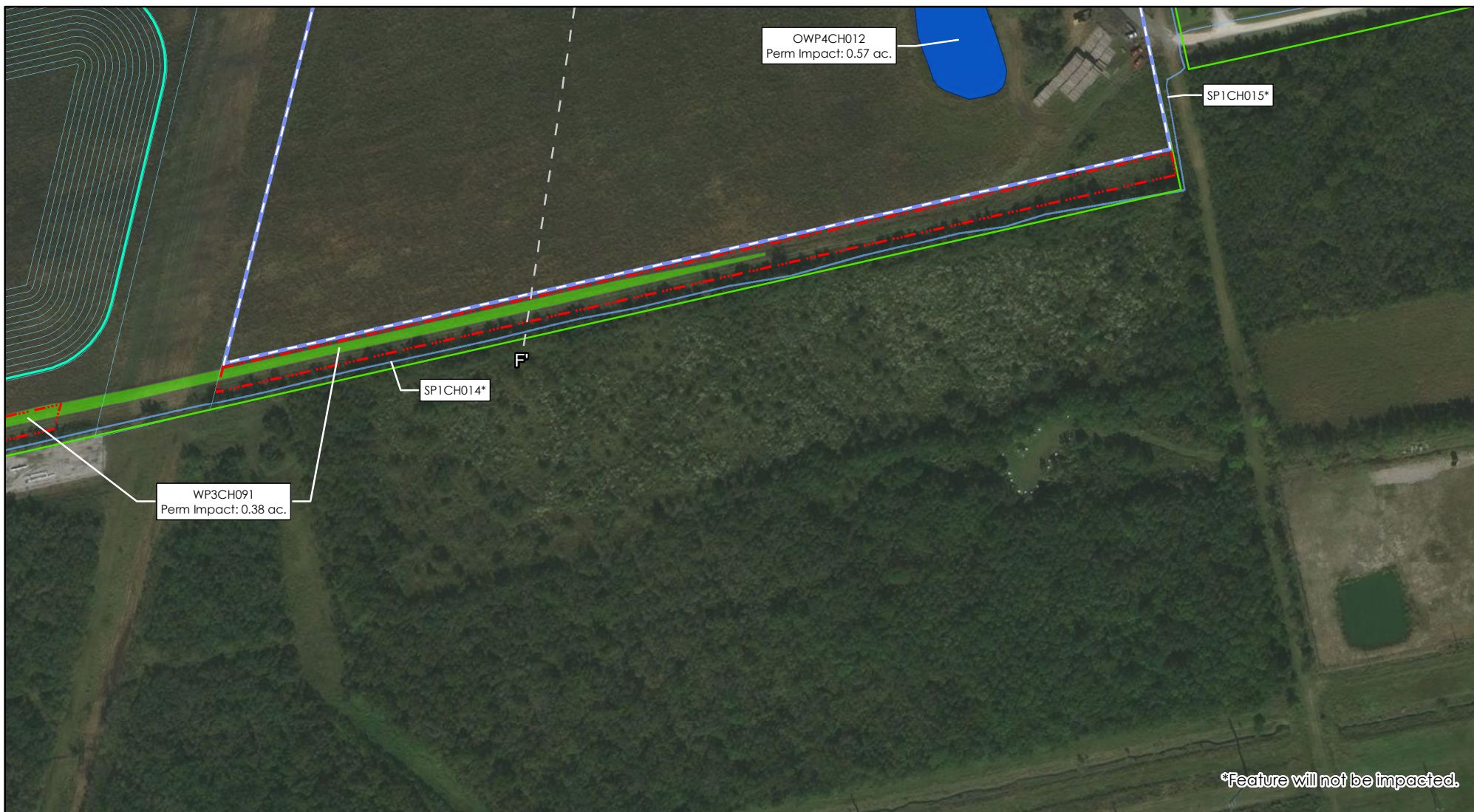
Note:
Temporary Impact for all Features: 0.00 ac.

0 250 500 Feet

N

**Aerial Map
Burton Station Project
Lone Star NGL Mont Belvieu LP
Chambers County, Texas**

Page 8 of 10	Scale: 1:3,000
NAD83 TX SC	Date: June, 2020



— — Cross Section	Disposal Well	Property Line
Access Road	Drainage Pond	Open Water
Brine Pond	Hydrocarbon Processing Unit	Stream
Brine Pond Infrastructure	Proposed Infrastructure Not Associated With Project	PEM Wetland
CWA Lift Station	Upland Floodplain Mitigation for Disposal Well 7	PFO Wetland
		PSS Wetland

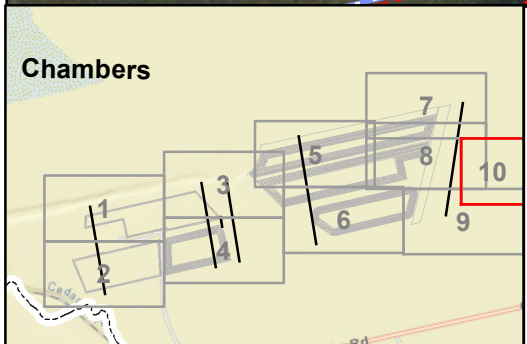
Note:
Temporary Impact for all Features: 0.00 ac.

0 250 500 Feet

N

**Aerial Map
Burton Station Project
Lone Star NGL Mont Belvieu LP
Chambers County, Texas**

Page 9 of 10	Scale: 1:3,000
NAD83 TX SC	Date: June, 2020



— — Cross Section	Disposal Well	Property Line
Access Road	Drainage Pond	Open Water
Brine Pond	Hydrocarbon Processing Unit	Stream
Brine Pond Infrastructure	Proposed Infrastructure Not Associated With Project	PEM Wetland
CWA Lift Station	Upland Floodplain Mitigation for Disposal Well 7	PFO Wetland
		PSS Wetland

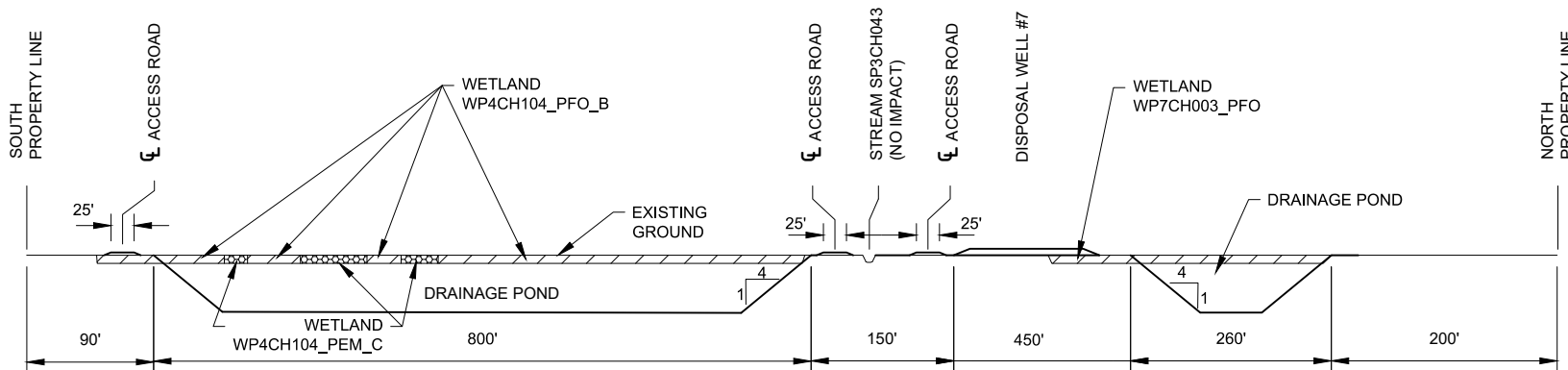
Note:
Temporary Impact for all Features: 0.00 ac.

0 250 500 Feet

N

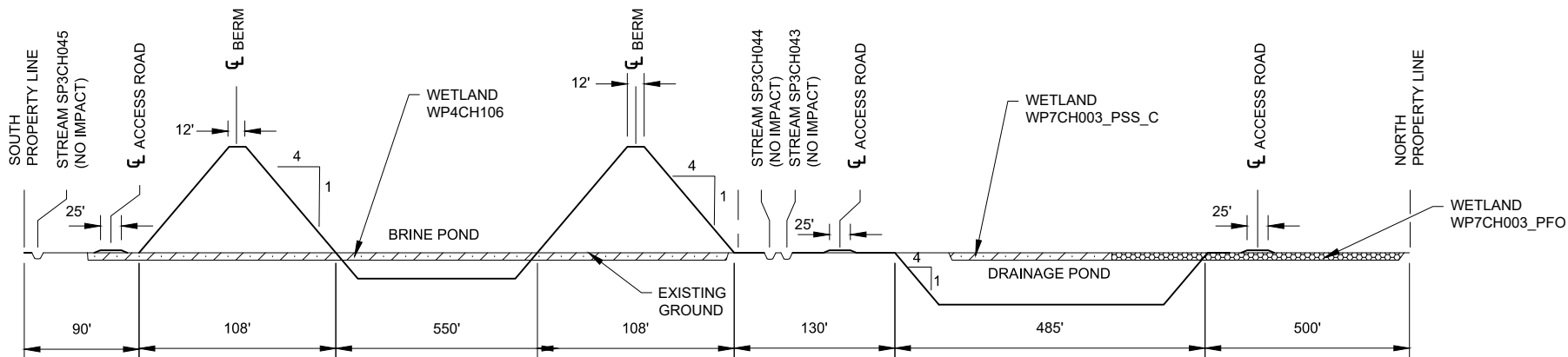
**Aerial Map
Burton Station Project
Lone Star NGL Mont Belvieu LP
Chambers County, Texas**

Page 10 of 10	Scale: 1:3,000
NAD83 TX SC	Date: June, 2020



CROSS SECTION A-A

N.T.S.



CROSS SECTION B-B

N.T.S.

Scale: None

Prepared By:



BURTON STATION DEVELOPMENT PROJECT
CHAMBERS COUNTY, TX

CROSS SECTIONS A-A & B-B

Prepared For:



LONE STAR NGL
An ENERGY TRANSFER Partnership

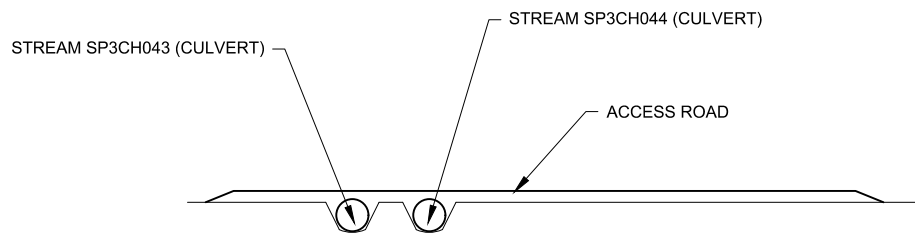
Date: 05/19/20

Project No: GRSA-1901

Drawn By: BKP

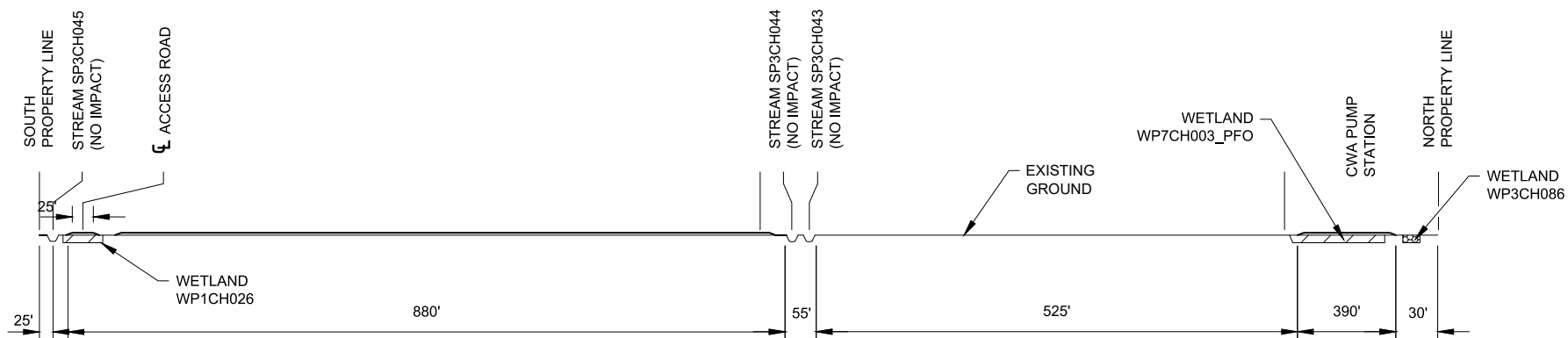
File: A-BURT-91-001

Rev: -



CROSS SECTION C-C

N.T.S.



CROSS SECTION D-D

N.T.S.

Scale: None

Prepared By:



BURTON STATION DEVELOPMENT PROJECT
CHAMBERS COUNTY, TX

CROSS SECTIONS C-C & D-D

Prepared For:



LONE STAR NGL
An ENERGY TRANSFER Partnership

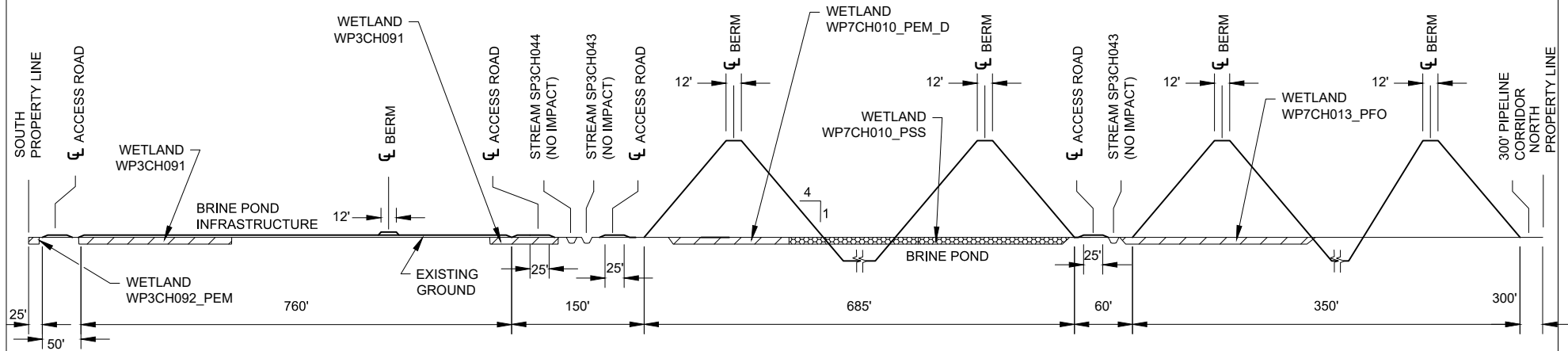
Date: 05/19/20

Project No: GRSA-1901

Drawn By: BKP

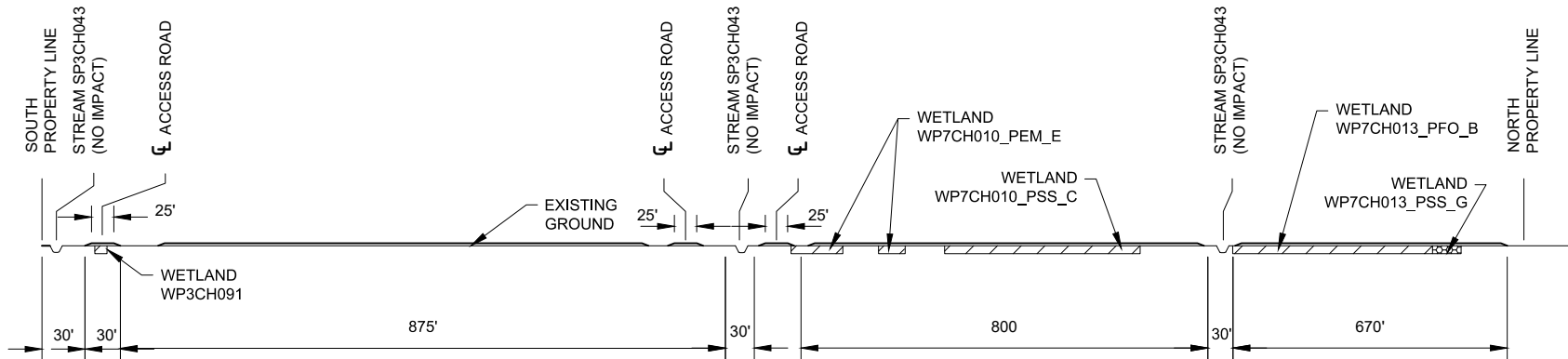
File: A-BURT-91-002

Rev: -



CROSS SECTION E-E

N.T.S.



CROSS SECTION F-F

N.T.S.

Scale: None

Prepared By:



BURTON STATION DEVELOPMENT PROJECT
CHAMBERS COUNTY, TX

CROSS SECTIONS E-E & F-F

Prepared For:



LONE STAR NGL
An ENERGY TRANSFER Partnership

Date: 05/19/20

Project No: GRSA-1901

Drawn By: BKP

File: A-BURT-91-003

Rev: -

Wetlands and Waterbodies Impacted by the Burton Station Project												
Feature ID	Feature Classification ^a	Jurisdictional Status	Location		Area (acres)/Linear Feet of Aquatic Resource	Crossing Method ¹	Crossing Distance ¹	Fill Material	Temporary Impacts (acres for wetlands/ ponds and linear feet for streams)	Permanent Fill Impacts (acres for wetlands/ ponds and linear feet for streams)	Permanent Fill Impacts (cubic yards)	Total Impacts (acres for wetlands/ ponds and linear feet for streams)
			Latitude	Longitude								
HPU 1												
OWP4CH012	Manmade Pond	§404	29.860767	-94.924051	0.57	N/A	N/A	Clean Fill	0.00	0.57	5535.60	0.57
TOTALS									0.00	0.57	5535.60	0.57
HPU 2												
WP7CH010_PEM_C	PEM	§404	29.863112	-94.924384	3.21	N/A	N/A	Clean Fill	0.00	3.21	2591.03	3.21
WP7CH010_PEM_E	PEM	§404	29.862445	-94.926208	3.32	N/A	N/A	Clean Fill	0.00	1.39	1120.16	1.39
WP7CH010_PSS_C	PSS	§404	29.863877	-94.92525	6.87	N/A	N/A	Clean Fill	0.00	6.72	5418.89	6.72
WP7CH013_PEM	PEM	§404	29.864491	-94.92646	3.07	N/A	N/A	Clean Fill	0.00	0.03	22.22	0.03
WP7CH013_PEM_B	PEM	§404	29.865756	-94.925947	0.09	N/A	N/A	Clean Fill	0.00	0.03	16.00	0.03
WP7CH013_PEM_C	PEM	§404	29.865856	-94.924257	0.10	N/A	N/A	Clean Fill	0.00	0.10	46.40	0.10
WP7CH013_PFO_B	PFO	§404	29.865117	-94.925197	9.95	N/A	N/A	Clean Fill	0.00	9.32	4508.60	9.32
WP7CH013_PSS	PSS	§404	29.865247	-94.924093	0.18	N/A	N/A	Clean Fill	0.00	0.18	145.09	0.18
WP7CH013_PSS_G	PSS	§404	29.865807	-94.925088	0.06	N/A	N/A	Clean Fill	0.00	0.06	30.26	0.06
TOTALS									0.00	21.03	13898.64	21.03
CWA Water Pump Expansion Area 1												
WP3CH086	PEM	§404	29.861898	-94.941518	0.10	N/A	N/A	Clean Fill	0.00	0.09	98.89	0.09
WP7CH003_PEM_F	PEM	§404	29.861758	-94.942207	0.07	N/A	N/A	Clean Fill	0.00	0.05	60.29	0.05
WP7CH003_PFO	PFO	§404	29.861278	-94.9413	32.29	N/A	N/A	Clean Fill	0.00	2.54	2049.10	2.54
WP7CH003A_PEM	PEM	§404	29.861744	-94.941175	0.06	N/A	N/A	Clean Fill	0.00	0.02	34.37	0.02
WP7CH003A_PFO	PFO	§404	29.861654	-94.941787	0.76	N/A	N/A	Clean Fill	0.00	0.14	223.03	0.14
WP7CH004_PEM	PEM	§404	29.861437	-94.940742	0.07	N/A	N/A	Clean Fill	0.00	0.00	0.53	0.00
TOTALS									0.00	2.84	2466.21	2.84
Detention Pond 1												
WP4CH104_PEM	PEM	§404	29.856527	-94.951423	0.12	N/A	N/A	Clean Fill	0.00	0.12	134.08	0.12
WP4CH104_PEM_B	PEM	§404	29.856799	-94.95175	0.29	N/A	N/A	Clean Fill	0.00	0.15	120.68	0.15
WP4CH104_PEM_C	PEM	§404	29.856798	-94.949108	2.48	N/A	N/A	Clean Fill	0.00	2.38	1920.08	2.38
WP4CH104_PFO	PFO	§404	29.856571	-94.948485	13.26	N/A	N/A	Clean Fill	0.00	10.24	8262.75	10.24
WP4CH104_PFO_B	PFO	§404	29.857207	-94.950613	8.11	N/A	N/A	Clean Fill	0.00	7.59	6120.36	7.59
WP4CH104_PFO_C	PFO	§404	29.856792	-94.949722	1.21	N/A	N/A	Clean Fill	0.00	1.21	975.43	1.21
WP4CH104_PFO_D	PFO	§404	29.8568	-94.94906	0.09	N/A	N/A	Clean Fill	0.00	0.09	74.87	0.09
WP4CH104_PFO_E	PFO	§404	29.857726	-94.947774	9.79	N/A	N/A	Clean Fill	0.00	9.01	10173.34	9.01
WP4CH104_PSS	PSS	§404	29.856	-94.951327	0.11	N/A	N/A	Clean Fill	0.00	0.11	120.07	0.11
TOTALS									0.00	30.90	27901.66	30.90
Detention Pond 2												
WP7CH003_PEM_B	PEM	§404	29.859556	-94.947777	0.12	N/A	N/A	Clean Fill	0.00	0.12	99.10	0.12
WP7CH003_PEM_C	PEM	§404	29.859707	-94.947191	0.11	N/A	N/A	Clean Fill	0.00	0.11	88.86	0.11

Wetlands and Waterbodies Impacted by the Burton Station Project												
Feature ID	Feature Classification ^a	Jurisdictional Status	Location		Area (acres)/Linear Feet of Aquatic Resource	Crossing Method ¹	Crossing Distance ¹	Fill Material	Temporary Impacts (acres for wetlands/ ponds and linear feet for streams)	Permanent Fill Impacts (acres for wetlands/ ponds and linear feet for streams)	Permanent Fill Impacts (cubic yards)	Total Impacts (acres for wetlands/ ponds and linear feet for streams)
			Latitude	Longitude								
WP7CH003_PEM_D	PEM	§404	29.860029	-94.942754	0.35	N/A	N/A	Clean Fill	0.00	0.30	240.65	0.30
WP7CH003_PEM_E	PEM	§404	29.859528	-94.943261	0.28	N/A	N/A	Clean Fill	0.00	0.09	75.48	0.09
WP7CH003_PFO	PFO	§404	29.860792	-94.943815	32.29	N/A	N/A	Clean Fill	0.00	17.01	13721.68	17.01
WP7CH003_PSS	PSS	§404	29.860038	-94.944992	0.78	N/A	N/A	Clean Fill	0.00	0.79	636.60	0.79
WP7CH003_PSS_B	PSS	§404	29.859649	-94.947459	0.17	N/A	N/A	Clean Fill	0.00	0.17	134.29	0.17
WP7CH003_PSS_C	PSS	§404	29.860023	-94.943117	2.62	N/A	N/A	Clean Fill	0.00	2.08	2349.48	2.08
WP7CH003A_PFO	PFO	§404	29.860936	-94.944315	0.76	N/A	N/A	Clean Fill	0.00	0.35	569.40	0.35
WP7CH003A_PSS	PSS	§404	29.860061	-94.945072	0.13	N/A	N/A	Clean Fill	0.00	0.13	203.17	0.13
WP7CH009	PEM	§404	29.859238	-94.946039	0.03	N/A	N/A	Clean Fill	0.00	0.03	20.60	0.03
TOTALS									0.00	21.18	18139.30	21.18
Disposal Well 6												
WP7CH010_PSS	PSS	§404	29.86287	-94.92856	29.18	N/A	N/A	Clean Fill	0.00	0.12	93.34	0.12
WP7CH010_PEM_E	PEM	§404	29.86185	-94.92822	3.32	N/A	N/A	Clean Fill	0.00	0.01	4.10	0.01
TOTALS									0.00	0.12	97.44	0.12
Disposal Well 7												
WP7CH001_PSS	PSS	§404	29.85833	-94.9515	0.34	N/A	N/A	Clean Fill	0.00	0.33	269.52	0.33
WP7CH003_PEM	PEM	§404	29.8591	-94.95117	0.05	N/A	N/A	Clean Fill	0.00	0.05	54.25	0.05
WP7CH001_PFO	PFO	§404	29.85851	-94.95165	0.02	N/A	N/A	Clean Fill	0.00	0.02	25.21	0.02
WP7CH003_PFO	PFO	§404	29.85933	-94.95092	32.29	N/A	N/A	Clean Fill	0.00	0.75	601.53	0.75
TOTALS									0.00	1.15	950.51	1.15
Brine Pond 9												
WP4CH106	PEM	§404	29.85815	-94.94272	2.17	N/A	N/A	Clean Fill	0.00	2.01	1623.57	2.01
WP4CH105	PEM	§404	29.85855	-94.94584	0.06	N/A	N/A	Clean Fill	0.00	0.01	15.63	0.01
WP1CH024	PEM	§404	29.85755	-94.94583	0.54	N/A	N/A	Clean Fill	0.00	0.07	59.32	0.07
TOTALS									0.00	2.10	1698.52	2.10
Brine Pond Infrastructure												
WP3CH091	PEM	§404	29.85913	-94.93446	9.05	N/A	N/A	Clean Fill	0.00	3.57	4033.16	3.57
TOTALS									0.00	3.57	4033.16	3.57
Brine Pond 11												
WP7CH010_PEM_D	PEM	§404	29.86108	-94.93652	5.17	N/A	N/A	Clean Fill	0.00	5.15	5816.99	5.15
WP7CH010_PSS	PSS	§404	29.86221	-94.9336	29.18	N/A	N/A	Clean Fill	0.00	28.11	22679.40	28.11
TOTALS									0.00	33.27	28496.39	33.27
Brine Pond 12												
WP7CH013_PFO	PFO	§404	29.86387	-94.93295	32.88	N/A	N/A	Clean Fill	0.00	28.42	22927.76	28.42
WP7CH013_PEM	PEM	§404	29.86547	-94.92821	3.07	N/A	N/A	Clean Fill	0.00	0.08	68.24	0.08
WP7CH013_PSS_B	PSS	§404	29.86248	-94.93868	0.15	N/A	N/A	Clean Fill	0.00	0.15	117.57	0.15

Wetlands and Waterbodies Impacted by the Burton Station Project												
Feature ID	Feature Classification ^a	Jurisdictional Status	Location		Area (acres)/Linear Feet of Aquatic Resource	Crossing Method ¹	Crossing Distance ¹	Fill Material	Temporary Impacts (acres for wetlands/ ponds and linear feet for streams)	Permanent Fill Impacts (acres for wetlands/ ponds and linear feet for streams)	Permanent Fill Impacts (cubic yards)	Total Impacts (acres for wetlands/ ponds and linear feet for streams)
			Latitude	Longitude								
WP7CH013_PSS_F	PSS	§404	29.86368	-94.93493	0.11	N/A	N/A	Clean Fill	0.00	0.11	85.32	0.11
WP7CH013_PSS_C	PSS	§404	29.865063	-94.929439	0.33	N/A	N/A	Clean Fill	0.00	0.19	90.48	0.19
WP7CH013_PSS_E	PSS	§404	29.864799	-94.928374	0.61	N/A	N/A	Clean Fill	0.00	0.55	266.54	0.55
TOTALS									0.00	29.50	2355.90	29.50
Access Road 1												
WP4CH104_PFO	PFO	§404	29.85588	-94.94868	13.26	N/A	N/A	Clean Fill	0.00	2.88	2320.69	2.88
WP4CH104_PEM_C	PEM	§404	29.85592	-94.94905	2.48	N/A	N/A	Clean Fill	0.00	0.04	33.82	0.04
TOTALS									0.00	2.92	2354.51	2.92
Access Road 2												
WP4CH104_PFO_E	PFO	§404	29.85828	-94.94731	9.79	N/A	N/A	Clean Fill	0.00	0.79	887.17	0.79
WP4CH104_PFO_B	PFO	§404	29.85788	-94.95055	8.11	N/A	N/A	Clean Fill	0.00	0.48	387.09	0.48
WP4CH105	PEM	§404	29.85857	-94.94592	0.06	N/A	N/A	Clean Fill	0.00	0.05	51.55	0.05
WP1CH024	PEM	§404	29.85721	-94.9459	0.54	N/A	N/A	Clean Fill	0.00	0.44	357.66	0.44
WP4CH104_PFO	PFO	§404	29.8573	-94.94611	13.26	N/A	N/A	Clean Fill	0.00	0.14	110.99	0.14
WP4CH104_PEM_C	PEM	§404	29.85771	-94.94612	2.48	N/A	N/A	Clean Fill	0.00	0.03	21.58	0.03
TOTALS									0.00	1.92	1816.05	1.92
Access Road 3												
WP4CH106	PEM	§404	29.85693	-94.94254	2.17	N/A	N/A	Clean Fill	0.00	0.16	128.53	0.16
WP1CH026	PEM	§404	29.85743	-94.93945	1.4	N/A	N/A	Clean Fill	0.00	0.02	18.91	0.02
WP1CH025	PSS	§404	29.85676	-94.94275	0.01	N/A	N/A	Clean Fill	0.00	0.01	7.82	0.01
WP1CH024	PEM	§404	29.85637	-94.94579	0.54	N/A	N/A	Clean Fill	0.00	0.06	48.40	0.06
SP3CH045	Ephemeral	§404	29.857355	-94.93914	0.22	N/A	N/A	N/A	2324.00	0.00	0.00	0.00
TOTALS									2324.00	0.25	203.66	0.25
Access Road 4												
WP7CH003A_PFO	PFO	§404	29.86139	-94.94345	0.76	N/A	N/A	Clean Fill	0.00	0.04	61.86	0.04
WP7CH003_PSS_C	PSS	§404	29.86042	-94.94243	2.62	N/A	N/A	Clean Fill	0.00	0.18	205.81	0.18
WP7CH003_PFO	PFO	§404	29.86094	-94.94298	32.29	N/A	N/A	Clean Fill	0.00	0.55	441.70	0.55
TOTALS									0.00	0.77	709.36	0.77
Access Road 5												
WP7CH003_PEM_D	PEM	§404	29.85955	-94.94265	0.35	N/A	N/A	Clean Fill	0.00	0.05	43.73	0.05
WP7CH003_PEM_E	PEM	§404	29.85942	-94.94336	0.28	N/A	N/A	Clean Fill	0.00	0.19	153.14	0.19
WP7CH008	PEM	§404	29.85903	-94.94569	0.09	N/A	N/A	Clean Fill	0.00	0.09	72.81	0.09
WP7CH009	PEM	§404	29.85916	-94.94600	0.03	N/A	N/A	Clean Fill	0.00	0.00	0.21	0.00
SP3CH043	Ephemeral	§404	29.859516	-94.94179	0.69	culvert	75'	Clean Fill/Culvert	8024.00	75.00	2.78	75.00
SP3CH044	Ephemeral	§404	29.859418	-94.941765	0.66	culvert	75'	Clean Fill/Culvert	7281.00	75.00	2.78	75.00
TOTALS									15305.00	0.33 ac / 150 LF	275.45	0.33 ac / 150 LF

Wetlands and Waterbodies Impacted by the Burton Station Project												
Feature ID	Feature Classification ^a	Jurisdictional Status	Location		Area (acres)/Linear Feet of Aquatic Resource	Crossing Method ¹	Crossing Distance ¹	Fill Material	Temporary Impacts (acres for wetlands/ ponds and linear feet for streams)	Permanent Fill Impacts (acres for wetlands/ ponds and linear feet for streams)	Permanent Fill Impacts (cubic yards)	Total Impacts (acres for wetlands/ ponds and linear feet for streams)
			Latitude	Longitude								
Access Road 6												
WP7CH010_PEM	PEM	§404	29.86146	-94.93919	0.48	N/A	N/A	Clean Fill	0.00	0.07	53.67	0.07
WP7CH010_PEM_D	PEM	§404	29.86044	-94.93651	5.17	N/A	N/A	Clean Fill	0.00	0.02	18.62	0.02
WP7CH011_PFO	PFO	§404	29.86206	-94.93978	0.01	N/A	N/A	Clean Fill	0.00	0.01	7.47	0.01
WP7CH010_PSS	PSS	§404	29.86174	-94.93562	29.18	N/A	N/A	Clean Fill	0.00	0.79	640.51	0.79
TOTALS									0.00	0.89	720.28	0.89
Access Road 7												
WP7CH010_PEM_E	PEM	§404	29.86222	-94.92613	3.32	N/A	N/A	Clean Fill	0.00	0.45	364.46	0.45
TOTALS									0.00	0.45	364.46	0.45
Access Road 8												
WP3CH091	PEM	§404	29.85951	-94.92676	9.05	N/A	N/A	Clean Fill	0.00	0.38	309.83	0.38
SP1CH014	Ephemeral	§404	29.859308	-94.927296	0.22	N/A	N/A	N/A	2842	0.00	0.00	0.00
TOTALS									2842.00	0.38	309.83	0.38
Access Road 9												
WP7CH002	PSS	§404	29.85817	-94.95066	0.01	N/A	N/A	Clean Fill	0.00	0.01	10.13	0.01
TOTALS									0.00	0.01	10.13	0.01
Access Road 10												
WP1CH027	PEM	§404	29.86084	-94.93262	0.18	N/A	N/A	Clean Fill	0.00	0.18	203.57	0.18
WP1CH028	PEM	§404	29.8611	-94.93101	0.08	N/A	N/A	Clean Fill	0.00	0.08	64.92	0.08
WP1CH029	PEM	§404	29.86149	-94.92853	0.29	N/A	N/A	Clean Fill	0.00	0.11	127.10	0.11
WP3CH091	PEM	§404	29.86021	-94.936334	9.05	N/A	N/A	Clean Fill	0.00	2.15	1735.44	2.15
TOTALS									0.00	2.52	2131.02	2.52
PROJECT TOTALS									20471 LF	156.67 ac / 150 LF	135668.09	156.67 ac / 150 LF

¹ Crossing method and distance containing N/A denotes wetland or waterbody feature that will be graded and permanently filled, or excavated during construction of the project. As such, crossing methods for these features are not applicable.